

CABLE & PULLING DATA

DWG CABLE LOCATION	LOCATION OF PULL	FROM ENCLOSURE	NO. OF CABLES	CABLE TYPE	ESTIMATED TENSION (LBS)	MAX ALLOWABLE TENSION (LBS)	ACTUAL TENSION (LBS)	COILS/FENDS	FRONT RUN LENGTH (FT)
1	395506	596369	3	1100A	401 (GRIP)	10,000	1	2	
3	#5 BOX	INT 465226	3	1/0A	60 (GRIP)	2,018	0.5	1	
4	#5 BOX	INT 845396	3	1/0A	448 (GRIP)	2,018	3	2	
5	#5 BOX	T491475	3	1/0A	352 (GRIP)	2,018	2.5	2	

TRANSFORMER DATA TABLE

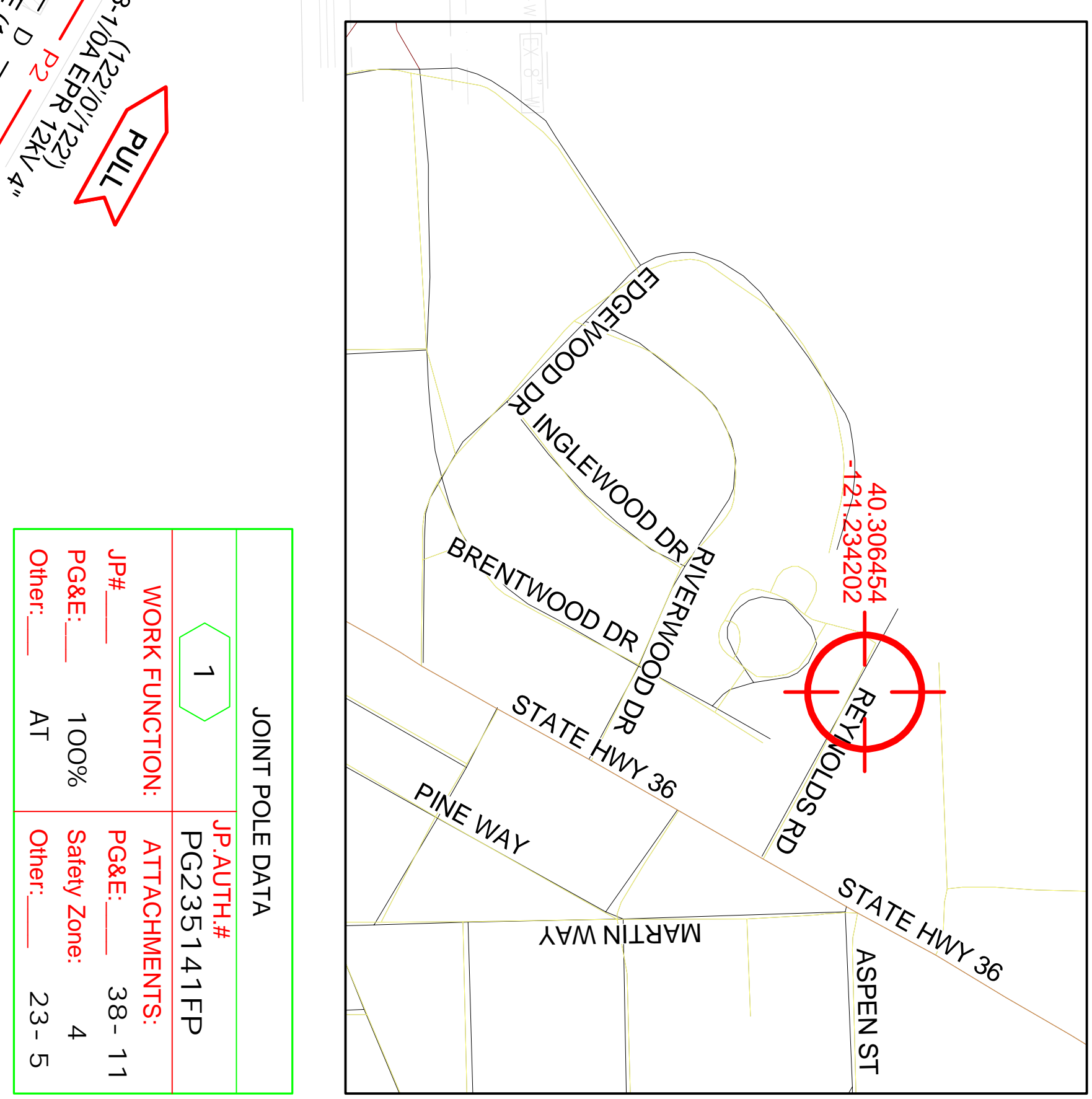
TRANSFORMER INFORMATION	LOAD INFORMATION	FIELD CONSTRUCTION INPUT							
TRF#	COORDINATE #	SIZE KVA	PHASE	ACUST	ESD	SEC	SERIAL #	MANUFACTURER	DATE
T-491475	100000181580	1500	3	3Ø	1	1595	277/480		

TRANSFORMER INFORMATION

TRANSFORMER INFORMATION	LOAD INFORMATION	FIELD CONSTRUCTION INPUT							
TRF#	COORDINATE #	SIZE KVA	PHASE	ACUST	ESD	SEC	SERIAL #	MANUFACTURER	DATE
T-491475	100000181580	1500	3	3Ø	1	1595	277/480		

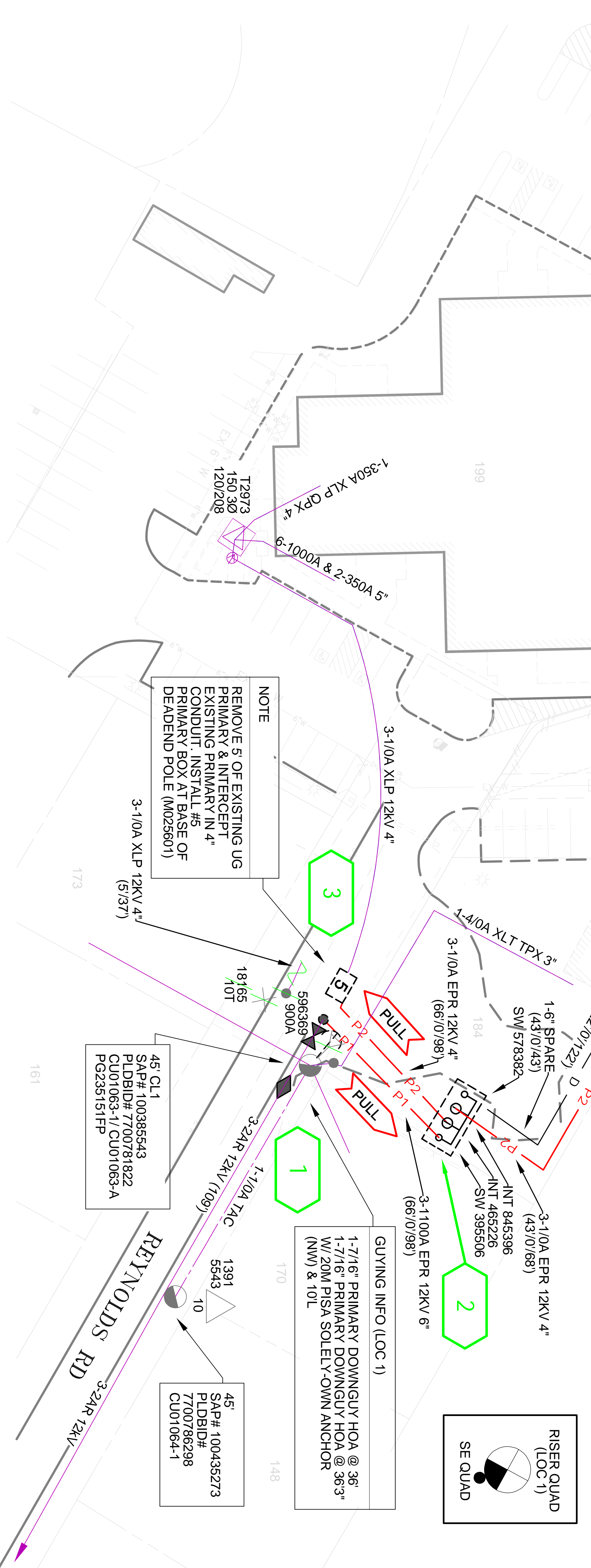
FIELD CONSTRUCTION INPUT

TRANSFORMER INFORMATION	LOAD INFORMATION	FIELD CONSTRUCTION INPUT							
TRF#	COORDINATE #	SIZE KVA	PHASE	ACUST	ESD	SEC	SERIAL #	MANUFACTURER	DATE
T-491475	100000181580	1500	3	3Ø	1	1595	277/480		



DESCRIPTION

INSTALL	REMOVE
P1	PG&E TO REMOVE 3-1100A EPR 12KV UNDERGROUND PRIMARY CABLE IN APPLICANT TO INSTALL SCHEDULE 40 1-6" CONDUIT
P2	PG&E TO REMOVE 3-10A EPR 12KV UNDERGROUND PRIMARY CABLE IN APPLICANT TO INSTALL SCHEDULE 40 1-4" CONDUIT
D	PG&E TO REMOVE 5/16" OF 3-10A XLP 12KV UNDERGROUND PRIMARY CABLE (LOC 1)
SV	PG&E TO REMOVE OVERHEAD FUSE 18165
	PG&E TO RELINQUISH JOINT ANCHOR TO PT (LOC 1)



TYPICAL TRENCH DETAIL

APPLICANT NOTES:

- APPLICANT TO TRENCH, INSTALL SUBSTRUCTURES, & BACKFILL
- APPLICANT TO PROVIDE FIELD MARKINGS DELINEATING EASEMENTS
- APPLICANT TO TRENCH PER 55453 EXHIBIT B
- APPLICANT TO INSTALL CONDUIT PER DWG #062288
- FOR POLE APPROVED MANUFACTURERS, SEE DWG #062211
- APPLICANT TO PROVIDE PROPER TRENCHING AND BACKFILLING
- APPLICANT'S CONDUIT MUST BE PROPERLY FLEECED AND CLEARED BY MEANS OF A MANDRE AND ALL CONDUITS WILL BE CAPPED
- APPLICANT'S BACKFILL MATERIAL MUST BE ON SITE AND THE TRENCH MUST BE INSPECTED PRIOR TO BACKFILL
- APPLICANT WILL BE REQUIRED TO INSTALL APPROVED SHORING FOR ANY TRENCH ACCORDING TO STATE EXCAVATION SAFETY STANDARDS
- CUSTOMER IS RESPONSIBLE FOR OBTAINING NECESSARY PERMITS REQUIRED BY LOCAL, CITY, COUNTY OR STATE AUTHORITIES
- TRENCHES SHALL HAVE PRE-CONSTRUCTION MEETING
- INSTALLATION OF A 6" WIDE WARNING TAPE TO BE PLACED 12"-18" OVER CENTER OF ELECTRICAL ONLY CONDUITS PER DWG# 038193
- BACKFILL MATERIAL CONTAINING NOT MORE THAN OCCASIONAL ROUNDED ROCKS LESS THAN 1/2" DIAMETER IS ACCEPTABLE
- MAINTAIN MINIMUM 2' BETWEEN SHOULDER AND EDGE OF TRENCH
- MAINTAIN PROPER SEPARATION BETWEEN POLES AND VET UTILITIES. THE MINIMUM ALLOWABLE HORIZONTAL SEPARATION BETWEEN 1/2" DIA. VET UTILITIES AND 1/2" DIA. CONDUITS SHALL BE 18" UNLESS OTHERWISE SPECIFIED
- WHERE JOINT TRENCH CROSSES OTHER FACILITIES, MAINTAIN A MINIMUM VERTICAL SEPARATION OF 6" FROM ALL DUCT
- SOIL COMPACTION MUST MEET PG&E'S AND ANY APPLICABLE FEDERAL, STATE, COUNTY AND LOCAL REQUIREMENTS. SEE DWG #063928
- ALL TRENCHES (ELECTRIC & JOINT) IN FRANCHISE (PUBLIC) AREA THE MINIMUM COVER FROM FINISHED GRADE TO TOP OF ELECTRICAL CONDUITS IS 30" PER DWG# 038193
- CONDUIT NOTES PER DWG# 038193:
- 30 DEGREES MIN. THE TOTAL LENGTH EXCEEDS 200 FT THEN THE TOTAL BENDS MUST NOT EXCEED 30 DEGREES
- FOR SECONDARY & SERVICES, THE CONDUIT RUN MUST NOT EXCEED 600 FT IF THERE IS A VERTICAL 90 DEGREE BEND AT BOTH ENDS
- FOR PRIMARY CABLES, TOTAL NUMBER OF BENDS INSTALLED IN CONDUIT RUN MUST NOT EXCEED 300 DEGREES
- WHEN THE CONDUIT RUN INCLUDES BENDS (300 DEGREES OR LESS), THE MAX LENGTH MUST BE LIMITED TO 800 FT
- FOR ALL CONDUITS, SERVICES, & 200AMP PRIMARY, THE CONDUIT RUN MUST NOT EXCEED 600 FT IF THERE IS A VERTICAL 90 DEGREE AT BOTH ENDS

CONDUIT (INCHES)	SWEEP DEGREE (INCHES)	RADIUS (INCHES)
4"	90	36
5"	90	60
6"	90	36

