

2.8 ELECTRICAL

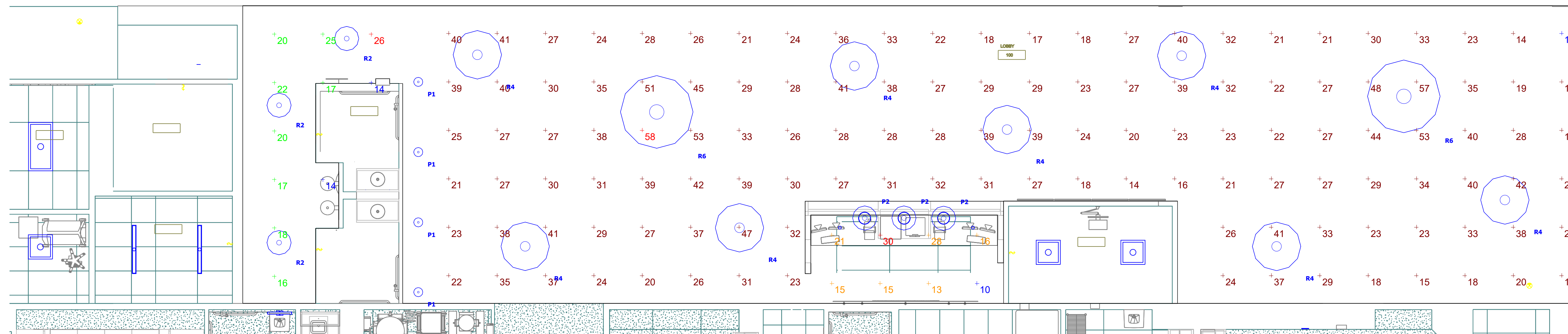
- A. Mall Design:
1. Lighting: Include the cost of the decorative lighting in the Main Lobby #100. No added circuits should be required in the area. See Appendix for sketch of revised lighting selections and layout. Additional fixture finishes as noted below.
 - a. <P1> Marimba LED pendant, color: White
 - b. <P2> Yolo LED pendant, color: black
 - c. <R2> 2' Ring LED, color: white
 - d. <R4> 4' Ring LED, color: white
 - e. <R6> 6' Ring LED, color: metallic champagne
 2. Include the cost of the ceiling fans within the Main Lobby #100 of the project. Fixture selection noted below:
 - a. Big Ass Fans – Haiku 84" MK-HK4-07, color: white
- B. E-power / lighting Adds: Include the cost of the equipment/lighting/receptacles to be moved over to emergency backed up circuits per Seneca's request as listed in the attachments within the original bid documents. These loads are owner requested due to facility location and potential for power outages.
- C. Therapy room 801 - Data/Electrical revisions: Relocate the GFCI device on circuit #1 to the location of the OT storage cabinet. The data location next to the sink needs to be moved from the sink to the OT storage cabinet as well.
- D. Additional inclusions:
1. Provide cost for an on site commissioning agent for start up and testing of systems
 2. Include rough in for future cellular DAS system
 3. Include rough in for future ERRCS DAS system
 4. Structural engineering for all anchors, attachments
- E. Incorporate Section 28 0612 Power Distribution Acceptance Tests in to the Project Manual.

2.9 TECHNOLOGY

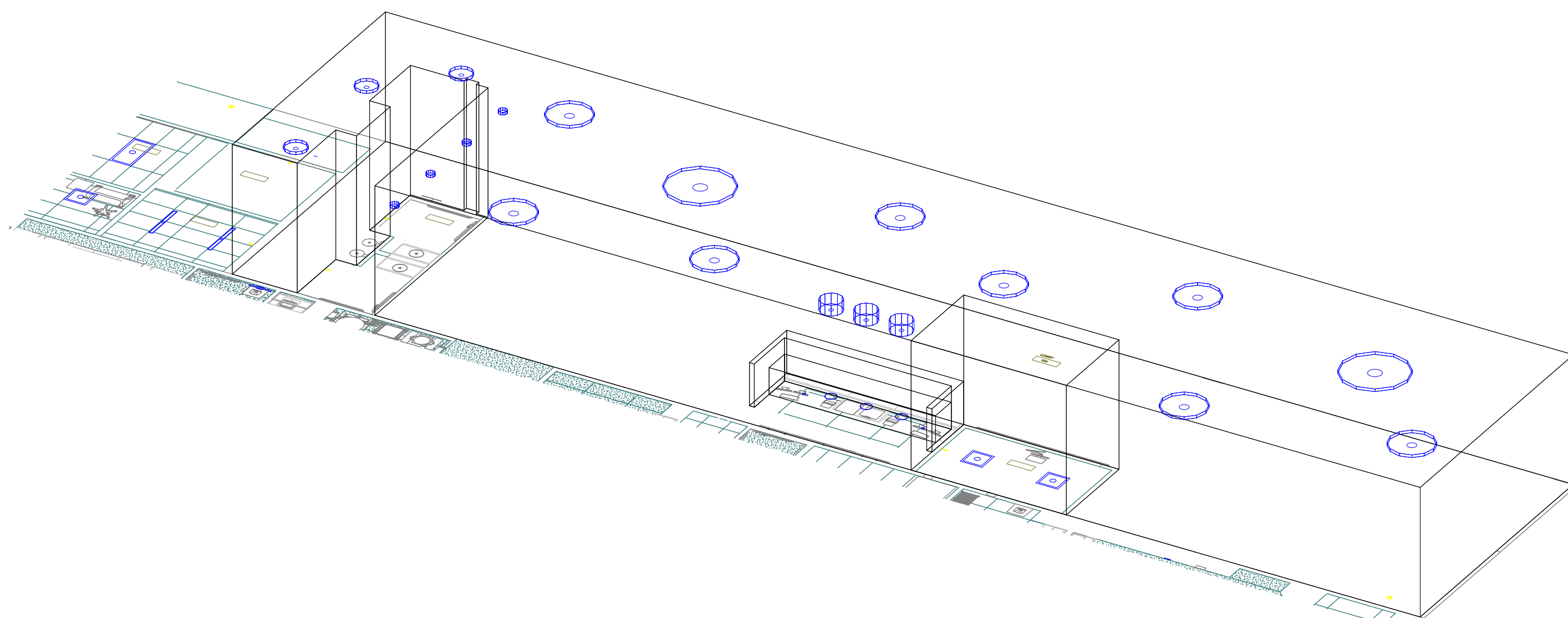
- A. WAP location discrepancy and product data:
1. Additional WAP locations identified by SRH to be included:
 - a. Add WAP device in Inpatient Passage #226 at the north end in front of Patient Toilet #222
 - b. Add WAP device in Inpatient Passage #226 outside of Meds Room #218
 - c. Adjust WAP device location in Inpatient Passage #226 outside of Private Pat Room #208, south in front of anteroom #211
 - d. Add WAP device in Corridor #316 outside of the door entering into Bio Waste Room #414
 - e. Add WAP device in Corridor #866 in front of the entrance door to Semi Private Room #859
 - f. Add WAP device in Corridor #831 in front of the entrance door to Semi Private Room #824
 2. WAPs to be Owner furnished
 - a. The following product selection is to be included.
 - 1) <https://techspecs.ui.com/unifi/wifi/u6-enterprise>
- B. Lab space Data: Each data location within the lab space should consist of (2) data jacks at each piece of equipment for each UPS
- C. Starlink & Dish/Direct TV: Provide accommodations as indicated below.

1. Starlink - One Cable from Antenna to Router connection in the MDF – Cable run must be less than 150 feet. – Antenna requires a clear view of the North Sky. Exact placement shall be determined by signal testing at the time of installation.
 2. Dish TV – The Dish requires Four (4) each coaxial cables and a 2 wire heater cable from the Dish to the Dish TV blade server that will need to be installed in the MDF – Cable run cannot exceed 100 Feet (If for any reason the cable run must exceed 100 Feet , a signal amplifier will need to be installed) – The dish heater that needs to be installed will require to be plugged into a 120V Electrical outlet . The Dish location requires a clear view of the Southern Sky and exact placement will be determined by testing at the time of installation.
- D. DAS system: Provide Design-build scope to include infrastructure to add DAS in system. Equipment to be listed as an Add alternate and to be added if a need is determined upon testing. Generic specifications have been included in the project manual to tentatively capture this scope.

APPENDIX



Plan View
Scale - 1" = 5ft



South East View

Symbol	Label	Image	QTY	Manufacturer	Catalog	Description	Number Lamps	Lamp Output	LLF	Input Power	Polar Plot
	P1		4	WAC Lighting	PD-52708	Marimba LED Pendant	1	302	0.9	13.4581	
	P2		3	WAC Lighting	PD-55726-SL	Yolo LED Pendant	1	888	0.9	25.1128	
	R2		3	BETA CALCO INC.	RNGP1P02-LPF055-CR80-CTA40	2' RING WHITE LED DIRECT	288	11	0.9	32.4	
	R4		8	BETA CALCO INC.	RNGP1P04-LPF055-CR80-CTA40	4' RING WHITE LED DIRECT	600	11	0.9	68.4	
	R6		2	BETA CALCO INC.	RNGP1P06-LPF055-CR80-CTA40	6' RING WHITE LED DIRECT	960	11	0.9	108	

Statistics						
Description	Symbol	Avg	Max	Min	Max/Min	Avg/Min
HALLWAY @ 0.01' AFF	+	19 fc	26 fc	14 fc	1.9:1	1.4:1
RECEPTION AREA	+	19 fc	30 fc	10 fc	3.0:1	1.9:1
100 LOBBY	+	30 fc	58 fc	10 fc	5.8:1	3.0:1

Luminaire Locations	
Label	MH
P1	10.00
P2	8.00
R2	10.00
R4	10.00
R6	10.00